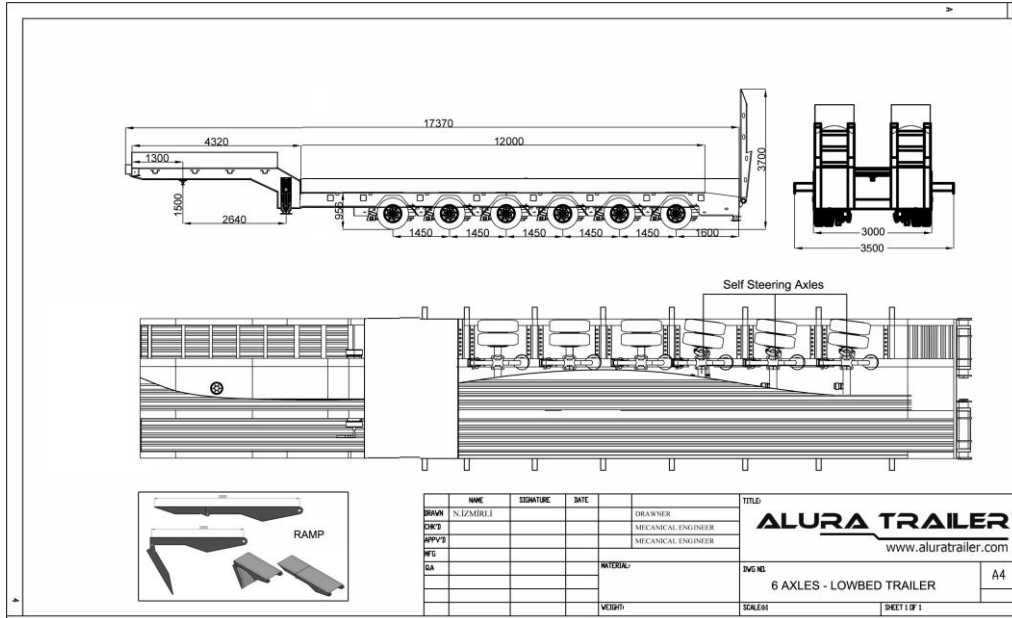


TECHNICAL SPECIFICATIONS FOR LOWBED – 6 AXLES – STEEL SUSPENSION

Weight & Dimensions



Capacity & Payload

Axles Load	: 72 Ton (12 X 6)
King-pin Load	: 16 Ton
Tare Weight	: 15 Ton (+/- 2%)
Payload	: 73 Ton (+/- 2%)

General Specifications

Reinforced Main Undercarriage has "I" Section. Made of ST52 Steel
 It consists of combination of lower and upper sheet bar and central hub steel sheet.
 It is welded with shielded metal arc electrode welding technology.
 Floor: Platform lower and side sections are covered with wood and patterned steel sheet.
 Suspension beam: Fixed suspension beam of which side sections have aluminum cover.
 King Pin: It can be dismantled in DIN standards, 2" or 3,5" double king pin is used.
 Tow truck conformity: Suitable with 4x2-6x2 or 6x4 tow truck.
 Axles: Drum Brake 6 x 12 Ton capacity.
 Tyres : 245 70 R 17.5 Sizes 24+1 units
 Suspension: Air suspension on 3 axles.
 Brake System : WABCO with EBS
 Steering system: There are 3 axles steering at rear
 Hydraulic rear ramps, adjustable both up/down and sides with remote control unit
 Brake system: Dual air brake system
 2x7 Pinned – 1 X 15 -, SAE Standard, Complete lighting system is used.
 7 Nos functioned rear stop lamps (horned).
 2 Nos white led illuminated front lamps.
 4 x 2 yellow led illuminated side lamps.
 2 Nos traffic license plate lamps.
 Rear rotating lamp.