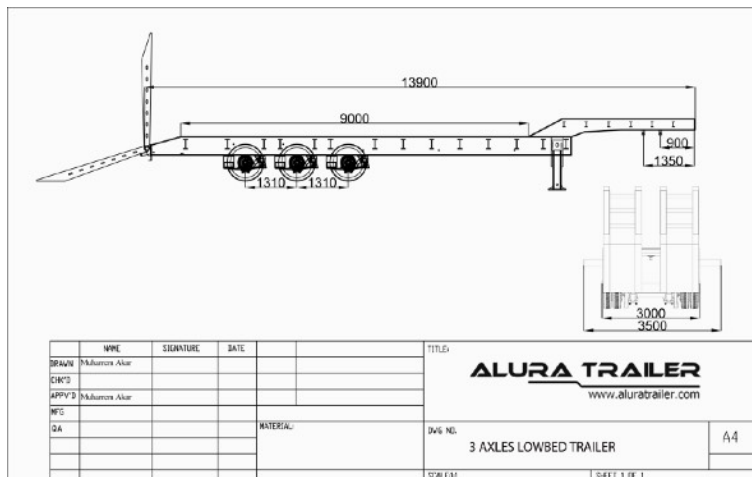


# LOWBED TRAILER - ALR-3

## TECHNICAL SPECIFICATION



### TECHNICAL INFORMATION

<b>Chassis</b>	High tension welded chassis made of St 52-3
<b>Brake System</b>	Wabco, EBS 4S/2M double circuit brake systems with RSS, spring-actuated parking brake in accordance with EC Directive 717320 EEC
<b>Electric System</b>	24 V lighting installation with 2X7 + 1X15 pin plug socket
<b>Landing Gear</b>	24 T mechanical landing gear
<b>Tyres</b>	6 units 385/65 R 22.5 tyres with steel rims
<b>Axles and Suspension</b>	KOC tri-axle with 12 T load capacity. First axle lifting with manual control from trailer

### TECHNICAL DATA

5th Wheel Height	1.200 mm
Neck Height	220 mm
Wheel Base	8.000 mm
Total Length (External)	13.900 mm
Side Outriggers	250 mm
Total Width (Extended)	3000 mm
Platform Height	970 mm

Designed for transportation of heavy goods; The semi-trailer can be equipped with additional rear self-steering axle enhances the maneuver capability in the toughest

### TECHNICAL CAPACITIES

Axle Load (Technically)	36.000 kg
King Pin Load	15.000 kg
Gross Weight	51.000 kg
Tare Weight	9.000 kg ±3%

### BASIC FEATURES

Hydraulic Ramp  
Steel & Wood Surface  
Goose Neck Covers  
Ro-Ro rings  
Side LEDs



## ALURA TRAILER

Yeni Istanbul Cad. Kosova Mah. No 182D / 105 - 42050 Selcuklu - Konya / TURKEY  
Tel : +90 332 346 00 80 Fax: +90 332 3460090  
Web: <https://www.aluratrailer.com> E-mail : [sales@aluratrailer.com](mailto:sales@aluratrailer.com)