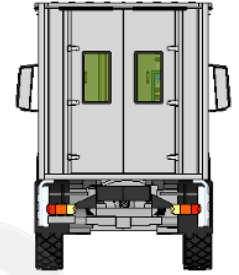
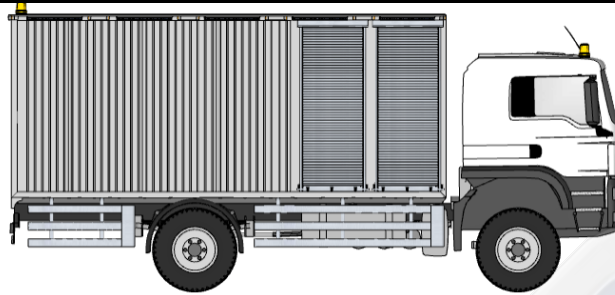


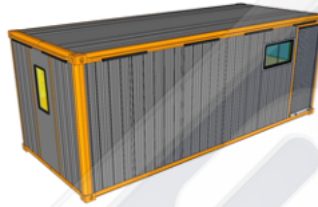
No	Equipment	Referans	Brand	Orijin	Piece
1	Mobile Service	26.008	Alura	Turkey	1



Dimensions / mm.	Length	6.000	Width	2.450	Height	2.550
------------------	--------	-------	-------	-------	--------	-------

Bodywork

MWS bent C type channel steel.
 Column sheets 3 mm. Panels 2 mm.
 Base cross members 80mm height 3mm.
 Base 18 mm Plywood.
 Sliding windows to usable areas.
 Stainless hinges and locks.



Sliding glass rear door.
 Monolithic crane connection channel to the body frame.
 Acrylic industrial chassis paint.
 Quick access rear bumper drawers.
 Metal parts are fixed to the chassis.

Outer Covering

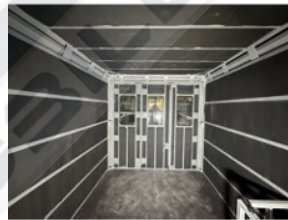
Polyurethane Industrial Coating
 Resistant to chemicals.
 Hygienic, mold-proof, rust-proof and corrosion-proof.
 Retains its elasticity between 40C/200 C.
 Fire resistant CLASS A certificate.



Solvent-free, superior water resistance.
 Prevents damage that may occur as a result of impact.
 CE certified.

Insulation

Elastomeric Rubber
 Edges, Ceiling 18/40 mm.
 Provides high performance thermal insulation with its low thermal conductivity structure.
 Has a high water vapor diffusion



Used in system solutions with high condensation risk.
 Increases energy amount.
 Protects against pressure fluctuations.
 Unaffected by mold and microorganisms, antimicrobial.

Control Panel

Center control panel.
 Generator and compressor areas are quickly accessible cover.
 Electrical cables are hidden inside the insulated chassis.
 Cables in protective plastic sheath.





Polyurethane hose in air line duct.
 Mains Electricity Connection Input.
 Perimeter and interior lighting 220v.

Finishing



No	Equipment	Picture	Specifications	Reference	Brand	Orijin	Pcs
2	Metal Cabinet & Drawers		Width: 1.000 mm Depth: 450 mm Height: 2.000 mm Shelves: 2 Pcs. Drawers: 3 pcs. Locking lids	6230	Kocel	Turkey	2
3	Work Bench		Work Bench Width: 1.500 mm Depth: 700 mm Height: 2.000 mm Number of Drawers: 10 Drawer Carrying Capacity: 60 kg.	ALR11180	Alura	Turkey	1
4	Metal Cabinet		Width: 920 mm Depth: 450 mm Height: 2.000 mm Shelves: 7 Pcs. Locking lids	6225	Kocel	Turkey	1
5	Generator Diesel 33 / 30 kVa		Prime: 33 kVa / 30 kVa Voltage: 400/230 V Phase / Hz : 3 Ph. 60 Hz. Engine Bran: Perkins Engine Model: 1103A-33G Alternator: Leroy Somer	FP33	Full Genset	Turkey	1
6	Electrode Welding Machine		Range: 5 - 300 A Mains Voltage: 400 V Power Mains: 16.1 kVA Source Current Adjustment Dim.: 526 x 250 x 408 mm Weight: 21 kg Electrode:1.60 - 5.00 mm.	ID 300 E	Magma weld	Turkey	1
7	Pistone Compressor 15 bar.		Engine Power: 7.5 hp Cylinders : 2 pcs Air Intake: 1146 lt/min Revolution : 1800 rpm Pressure : 12 bar Working Power : 380 V	ATH15-7.5	Abac	Italy	1

No	Equipment	Picture	Specifications	Reference	Brand	Orijin	Pcs
8	Air Tank 250 lt.		Capacity : 250 lt. Working Pressure: 15 bar. Test Pressure: 15 Bar. Sheet Thickness: 4 mm. Compressor Con. : 1" Air Outlet : 1/2"	ALR4 50/250	Alura	Turkey	1
9	Wire Rope Ground Hoist 20 mt.		Capacity: 3 tons. Rope length: 24 mt. Pulling speed: 5 mt/min. Power: 3 kW Rope diameter: 8 mm Voltage: 380 V Dim.: 530x450x445 mm	EDE-3000	Ede	Turkey	1
10	Washing Machine Cold		Pressure: 200 bar Flow rate: 900 lt/hour Engine Power: 7.5 hp Voltage Ph. 380V-3 60 Hz Weight: 74 Spray gun	ST2100	Rottest	Turkey	1
11	Washing Reel 15 mt.		Pressure: 400 bar. Hose Length: 15 mt. Compatible fluids: Water Swivel joint: Stainless Metal Characteristic: Fixed Material: Painted steel	995.518	Raasm	Italy	1
12	Water Tank 1.000 lt.		Capacity : 1.000 Ltr Made of Stainless : 2 mm Level Indicator : Manuel Filling tap : 1" Pump stabilizer : 1" Discharging valve : 1"	ALR21500	Alura	Turkey	1
13	Water Pump		Withstand Pres.: 30 bar Motor Power: 4 kW Rotation Speed: 2900 rpm Flow Rate: 17 m ³ /hour Number of Stages: 2 Discharge Head: 300 m	SYT32/2	Sumak	Turkey	1

No	Equipment	Picture	Specifications	Reference	Brand	Orijin	Pcs
14	Water Hose Reel		Inlet-Outlet: 2" Hose: 2" / 30 meters Seal: Teflon Maximum working pressure: 120 Bar Stainless steel	1606-50	Ergo	Turkey	1
15	Flat Irrigation Hose, 30 meters.		Length: 30 meters Material: PVC Size: 1" Aluminum quick-connect sockets	78G5IHT	Sel	Turkey	1
16	Battry Booster 12/24 V		Voltage: 12-24V Boos.Rate:5000/2500 P Internal Battery: 2x 22 Ah Cable Diameter: 50 mm ² Cable Length: 165 cm Dim.: 32.5x19.5x43.5 cm Weight: 17 kg	901	Brio	Germany	1
17	Aluminum Shutters		Manuel Working Locking Systems Size : 100x230 cm 2 pcs.	CLK100230	Celiksán	Turkey	2
18	Cable Reel 15 mt.		Three Phase : 400 Volt Cable Thickness: 5x2.5 mm Cable Length: 20 Mt H07RN-F Power : 1000-3000 W Auto Rewind Weight: 8.3 Kg	820722	Mavel	Italy	1
19	Air Reel 15 mt.		Hose Length:20mt. 10x15mm Working Pressure: 15 Bar Inlet and Outlet Dim.: 3/8" Automatic Rewind Steel swivel wall bracket Weight: 8.3 Kg	880100	Mavel	Italy	1

No	Equipment	Picture	Specifications	Reference	Brand	Orijin	Pcs
20	Rotating Work Warning Lamp		10-110 V Flashing, Rotating Lamp 60 LED Height: 9.50 cm Magnetic, Wired	NR-160320	Norma	Turkey	4
21	Outdoor Lighting		Operating : DC 24/15V Current strength: 1.4 A Light Source: 3W 12pcs. LENS Feature: 25° LENS White:5000-7000K Polycarbonate plastic black aluminum profile	CSR24.800	CSR	Turkey	10
22	Lighting		Watt: 19 W Light Flux: 1800 Lm Dim Feature: Fixed Driver Product Life: 25000 H Color Temperature: 4000K IP Protection Class: IP65	WT066C	Philips	Turkey	6
23	Air Regulator		Air Inlet : 1/2" Filter : 20u Working Pres.: 05-9.9 atu Operating Temp.: 5-60°C Water Capacity: 80 ml Air Permeability: 2200 lt/min	OPT3042FR	Osaka	Japan	1
24	Pneumatic Water Trap		Working Pres.:1-70 kg/cm ² Max. Working: 400 lt/min Max. Pressure: 14 bar Fluid Temperature: 5-60° C Inlet Connection: 1/2" Moisture Separation: 96% Weight: 0.70 kg	OPT-P1000	Osaka	Japan	1
25	Fire Extinguisher		ABC Grade Fire Ext. Powder 6 Kg Capacity MAP Rate 40% Body made of A1 7114 Quality Plastered Sheet 18 Bar Working Pressure Mic.Electro Static Paint.	STR1806	Star	Turkey	3



No	Equipment	Reference	Brand	Orijin	Piece
1	Mobile Service	26.008	Alura	Turkey	1
2	Metal Cabinet & Drawers	6230	Kocel	Turkey	2
3	Work Bench	ALR11180	Alura	Turkey	1
4	Metal Cabinet	6225	Kocel	Turkey	1
5	Generator Diesel 33 / 30 kVa	FP33	Full Genset	Turkey	1
6	Electrode Welding Machine	ID 300 E	Magmaweld	Turkey	1
7	Pistone Compressor 12 bar.	ATH15-7.5	Abac	Italy	1
8	Air Tank 250 lt.	ALR450/250	Alura	Turkey	1
9	Wire Rope Ground Hoist 20 mt.	EDE-3000	Ede	Turkey	1
10	Washing Machine Cold	ST2100	Rottest	Turkey	1
11	Washing Reel15 mt.	995.518	Raasm	Italy	1
12	Water Tank 1.000 lt.	ALR21500	Alura	Italy	3
13	Water Pump	SYT32/2	Sumak	Turkey	1
14	Water Hose Reel	1606-50	Ergo	Turkey	1
15	Flat Irrigation Hose, 30 meters.	78G5IHT	Sel	Turkey	1
16	Battry Booster 12/24 V	901	Brio	Germany	1
17	Aluminum Shutters	CLK100230	Celiksan	Turkey	2
18	Cable Reel 15 mt.	820722	Mavel	Italy	1
19	Air Reel 15 mt.	880100	Mavel	Italy	1
20	Rotating Work Warning Lamp	NR-160320	Norma	Turkey	4
21	OutdoorLighting	CSR24.800	CSR	Turkey	10
22	Lighting	WT066C	Philips	Turkey	6
23	Air Regulator	OPT3042FRL	Osaka	Japan	1
24	Pneumatic Water Trap	OPT-P1000	Osaka	Japan	1
25	Fire Extinguisher	STR1806	Star	Turkey	3